

# PREVENTION AND RESPONSE: GOVERNMENT & INDUSTRY PARTNERSHIP

## DEEPWATER HORIZON RESPONSE IN THE GULF OF MEXICO

RADM James Watson, U.S. Coast Guard  
Deputy Commander, Atlantic Area



United States Coast Guard  
U.S. Department of Homeland Security

1

## Successful Maritime Response: Relationships & Collaboration

- Establishing Relationships
  - Prior to event
  - During exercise and planning phase
- Open Collaboration
  - Sharing ideas – best solutions utilized
  - Resources from both government and industry

**Leads to quick and effect response**



United States Coast Guard  
U.S. Department of Homeland Security

2

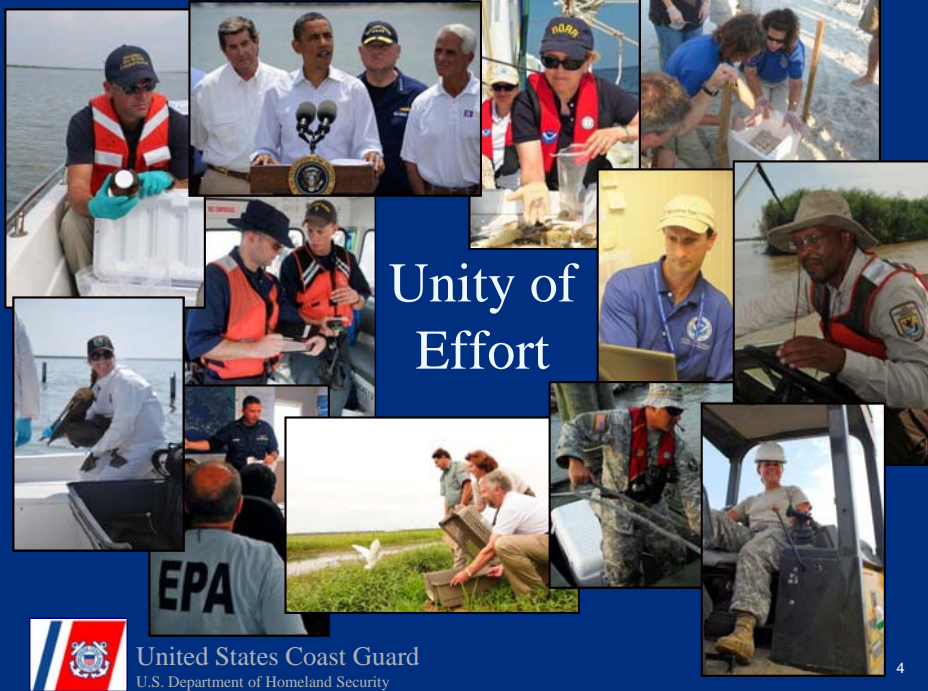
# Deepwater Horizon Incident

- Dynamically positioned, semi-submersible drilling unit
- Located 41 miles (66 km) off coast in 5,000 feet of water (1,500 m)
- 126 member crew; 11 killed.
- April 20, 2010 at 2200, U.S. Coast Guard was notified of fire/explosion
- April 22, 2010 at 1022 Deepwater Horizon sank



United States Coast Guard  
U.S. Department of Homeland Security

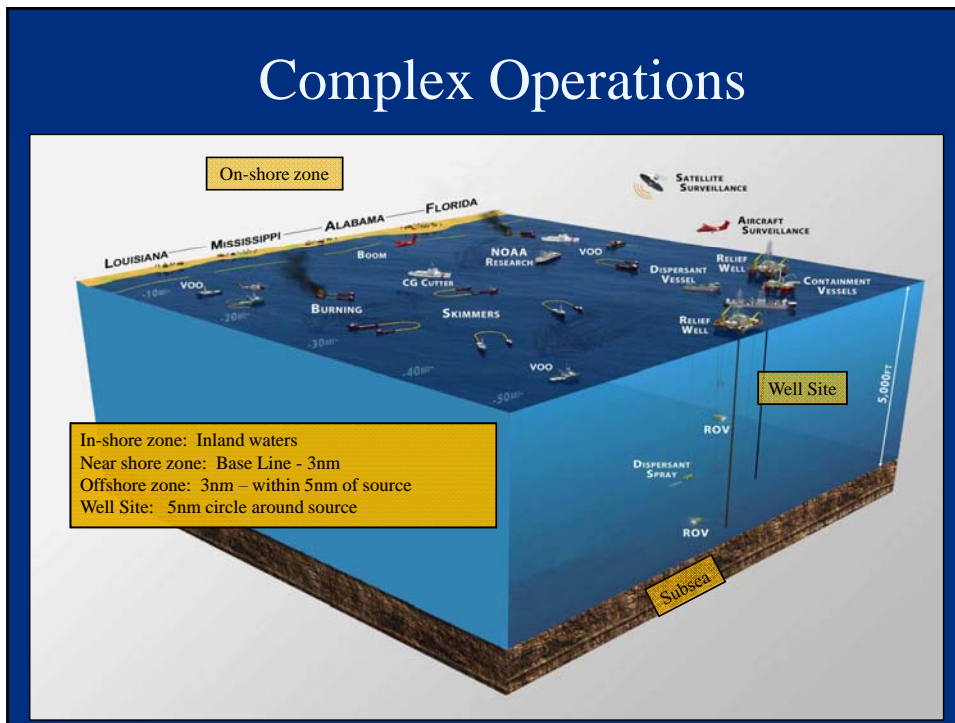
3



United States Coast Guard  
U.S. Department of Homeland Security

4

# Complex Operations



# Deepwater Exploration

- Depth: 1,500 m below sea level
  - Remote Operated Vehicle use only
- Technology expertise resided with Industry



Blow out Preventer & Lower Marine Riser Pack



Capping Stack



United States Coast Guard  
 U.S. Department of Homeland Security

## Challenges of Government/Industry Partnership

- Creating a single response organization incorporating multiple organizational cultures
- Public understanding on having the Responsible Party within the command & control structure

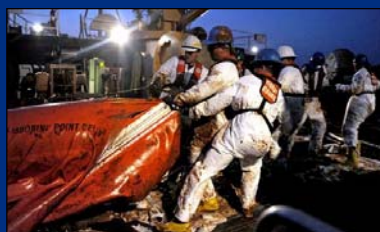


United States Coast Guard  
U.S. Department of Homeland Security

7

## Recommendations

- Develop strong relationships early
- Develop comprehensive plans and exercise regularly
- Utilize a common response system (Incident Command System) to standardize terminology and processes
- Develop a unifying information system



United States Coast Guard  
U.S. Department of Homeland Security

The collage consists of four distinct images. The top-left image shows two workers in safety gear on a barge, surrounded by large white sacks. The top-right image is a night-time underwater scene with green and blue lighting, possibly showing a diver or a submerged structure. The bottom-left image is an aerial view of an offshore oil rig and several support vessels in the open sea. The bottom-right image shows a containment boom in a marshy area, likely used for oil spill response.

# Questions

United States Coast Guard  
U.S. Department of Homeland Security

9